

**The water warrior versus water waster activity supports water efficiency education.**

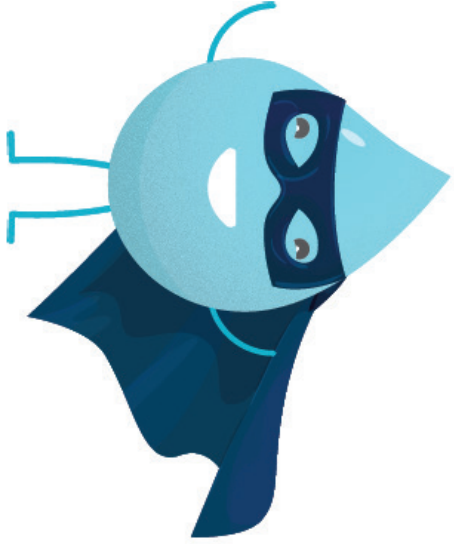
## Resources for each group

- Water warrior sign
- Water waster sign
- Set of 18 cards with water warrior and water waster behaviours

## Instructions

1. Ensure there is plenty of floor space or tables available.
2. Explain **Water warrior** - someone who is careful with their water.  
**Water waster** - someone who is careless and wasteful with water.
3. Show the students some of the images and give some hints as to what they mean.
4. Explain that they will be given these images and their job will be to decide whether the photos are examples of **water warrior** or **water waster** behaviour.
5. Explain how to set the game up:
  - Put the **water warrior** sign on one the left and the **water waster** sign on the right.
  - Spread all the photos on the floor so everyone in the group can see them and then decide as a team which photo should go where.
6. Put students into groups.
  - Give each group their **water warrior** and **water waster** signs and the cards with the images.
  - Ask them to set up their game as described.
  - Students discuss the photos and decide which should go where.
  - Assist each group as required.
  - Suggest they re-think some of them if they've got some incorrect.
7. When they've finished ask each group questions to share why they've decided it is a **water warrior** behaviour or a **water waster** behaviour.

Print and cut out one sheet per group.

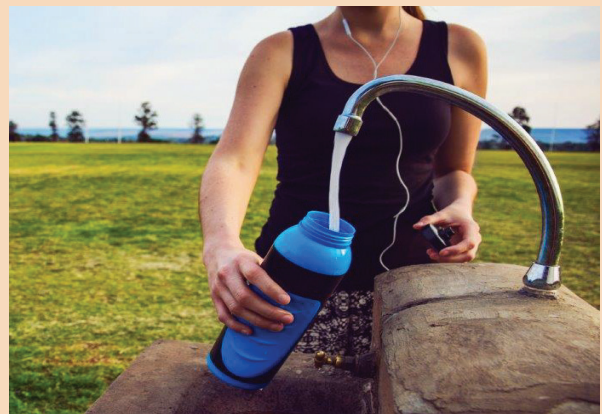


**WATER  
WARRIOR**



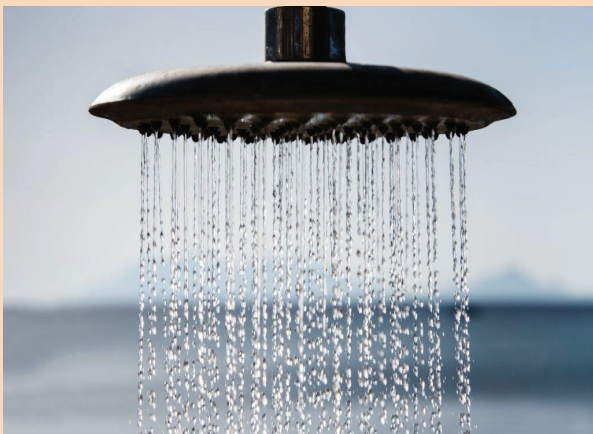
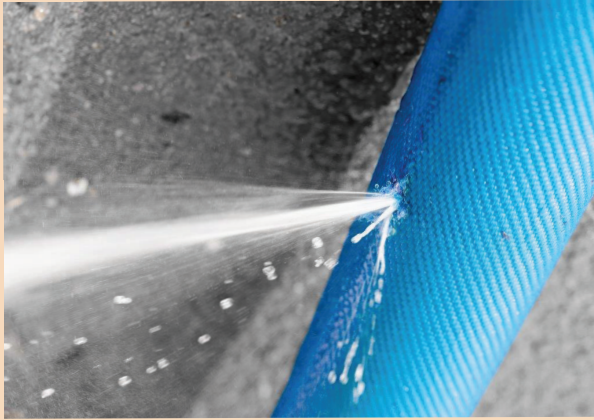
**WATER  
MASTER**

Print and cut out one set of cards per group.





Print and cut out one set of cards per group.



Print and cut out one set of cards per group.

