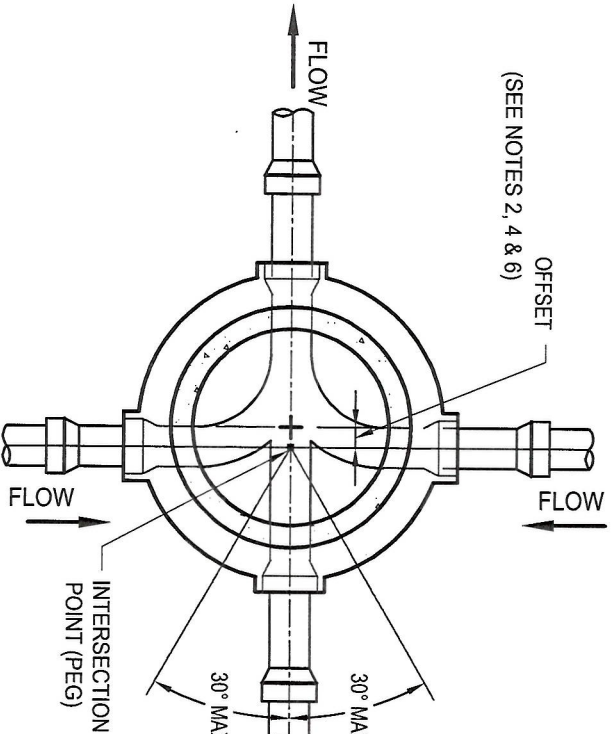
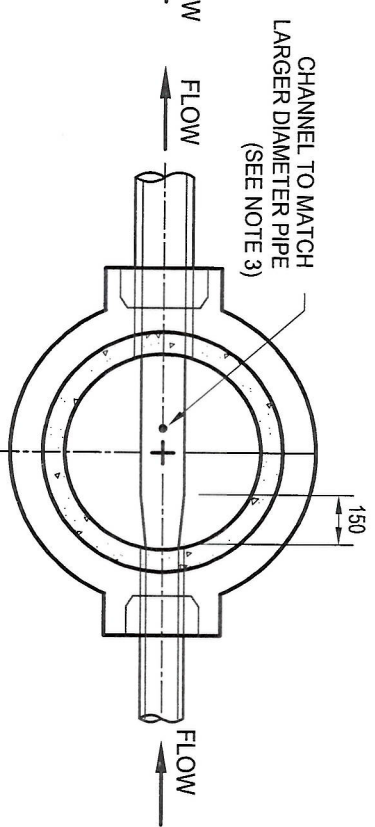


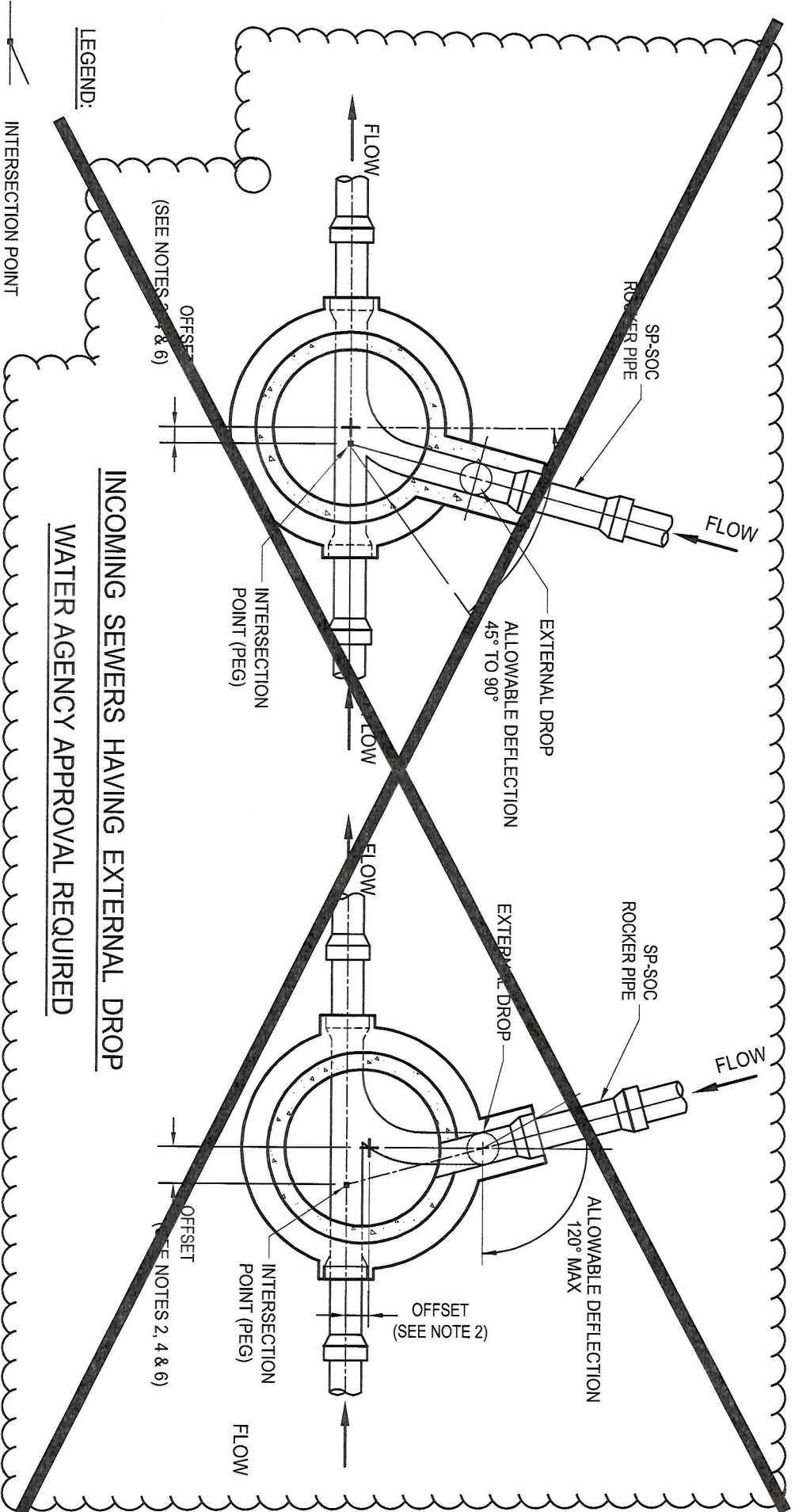
CHANGE IN DIRECTION OF SEWER



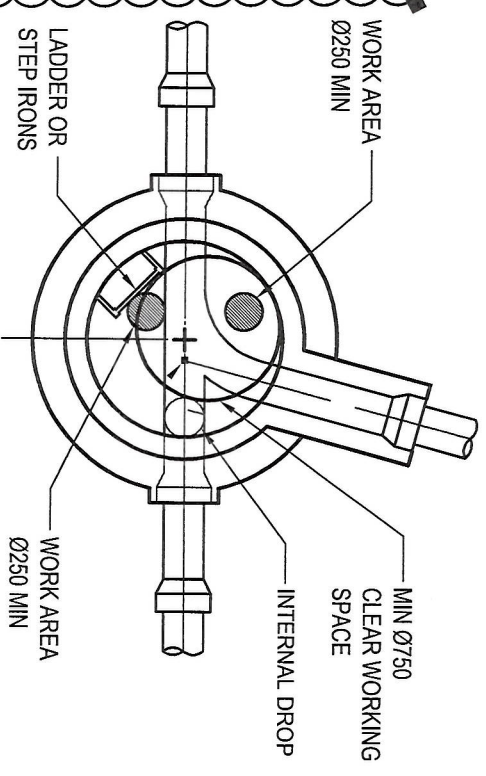
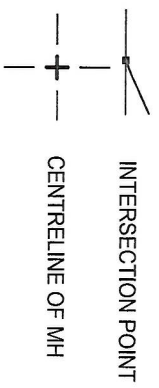
MULTIPLE INCOMING SEWERS



CHANGE IN DIAMETER OF SEWER



INCOMING SEWERS HAVING EXTERNAL DROP
WATER AGENCY APPROVAL REQUIRED



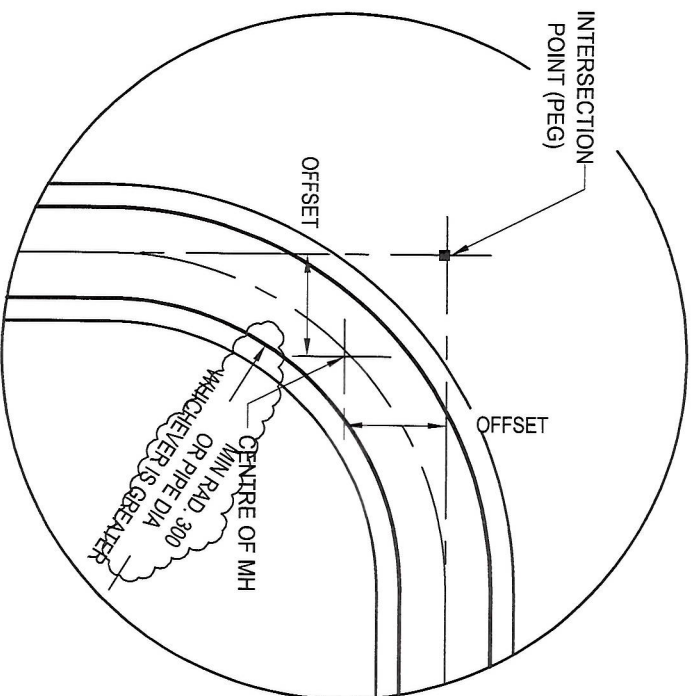
TYPICAL BASE DESIGN

- NOTES:
1. ALL DIMENSIONS IN MILLIMETRES.
 2. WHERE NECESSARY PULL MH OFF CENTRELINE OF SEWER (MAX 200) TO IMPROVE FLOW AND ACCESSIBILITY PROVIDED THE FOLLOWING CONDITIONS ARE MET:
 - ALL TANGENT POINTS TO BE CONTAINED WITHIN MH.
 - SUFFICIENT WORK AREA AVAILABLE.
 - MAINTENANCE EQUIPMENT CAN BE USED IN ALL MAINS.
 - OFFSET AS SPECIFIED.
 3. INVERT LEVELS TO BE AS SHOWN IN DESIGN DRAWINGS.
 4. FOR CHANNEL INTERSECTION AND OFFSET DETAILS SEE SEW-1305-V.
 5. FOR INLET - OUTLET ARRANGEMENTS SEE SEW-1303-V.
 6. FOR SEWERS ON STEEP GRADES OR WHERE THE INTERSECTION ANGLE IS <math><45^\circ</math> USE DROP JUNCTION AS SHOWN ON SEW-1306-V.

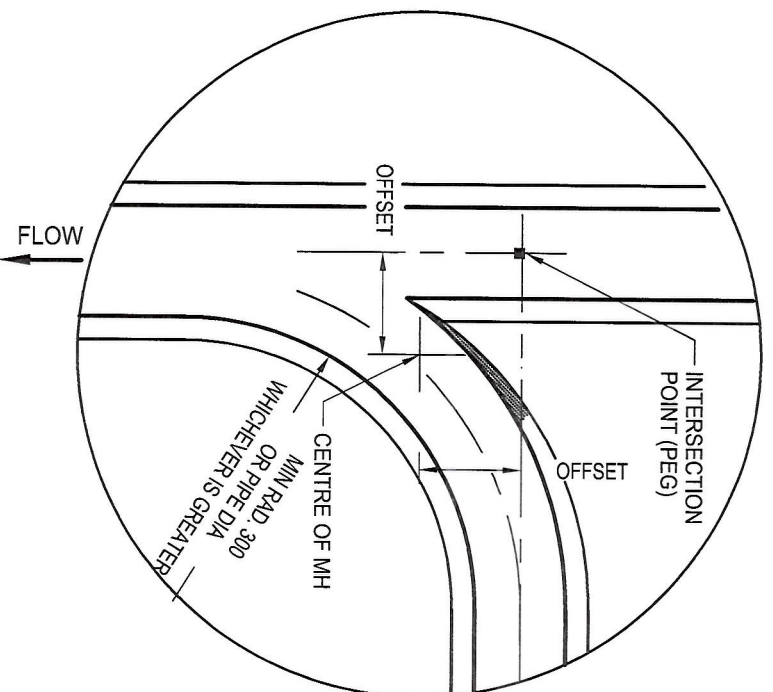
CITY WEST WATER
SOUTH EAST WATER
YARRA VALLEY WATER
WITH ACKNOWLEDGEMENT TO
WATER SERVICES ASSOCIATION
of Australia

SEWERAGE CODE OF AUSTRALIA
MAINTENANCE HOLES
TYPICAL CHANNEL ARRANGEMENT

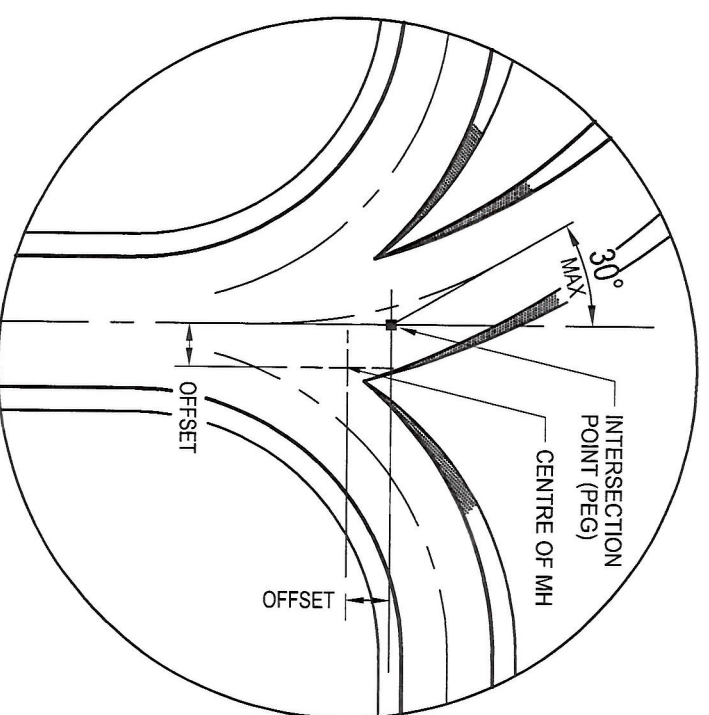
NOT TO SCALE
SEW - 1304 - V
ISSUED 2004 VERSION 1.1



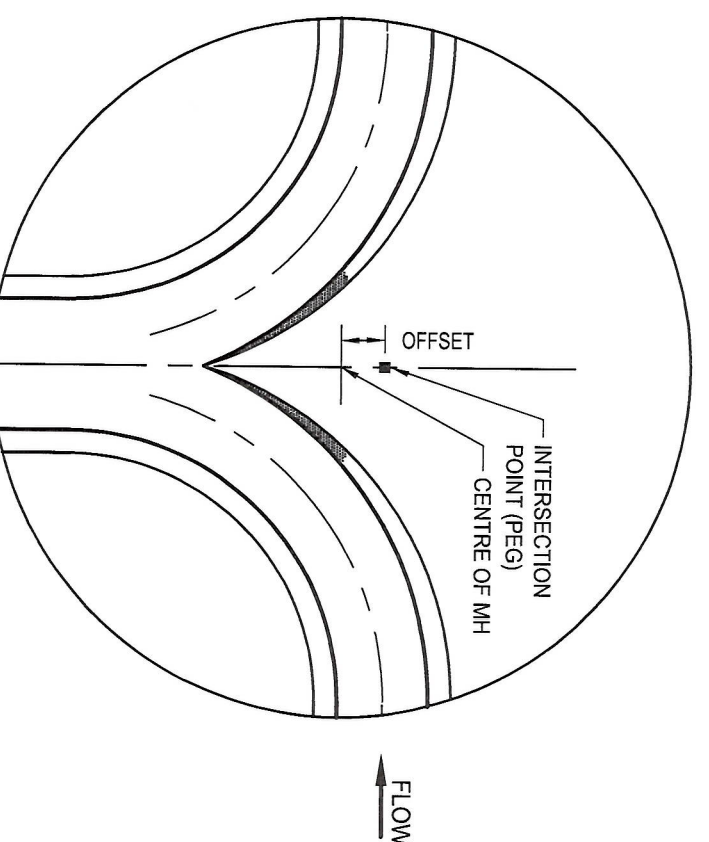
90° BEND



STRAIGHT THROUGH & 90° INLET



LARGER MAIN LINE WITH BEND & 2 X SMALLER 90° OPPOSING INLETS

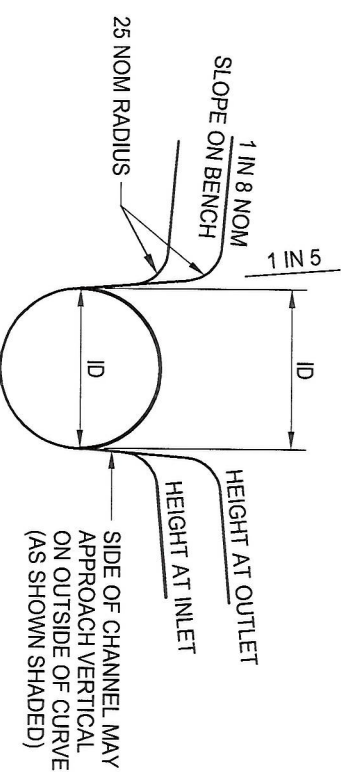


OPPOSING INLETS
90° OUTLET

MANHOLE TABLE DESIGN MUST ALLOW FOR WATER COMPANIES REQUIREMENTS FOR LADDERS, STEP IRONS, DROP PIPES, STANDINGS AREAS ON TABLES, ETC.

LEGEND

R RADIUS
TP TANGENT POINT



TYPICAL CHANNEL DETAILS

- NOTES:
1. ALL DIMENSIONS IN MILLIMETRES.
 2. AREAS SHOWN INDICATE WHERE THE SIDE OF THE CHANNEL APPROACHES VERTICAL ON OUTSIDE OF CURVE
 3. CHANNELS SHOWN ARE FOR DN 150 & DN 225 PIPES IN STANDARD DN 1050 MH.
 4. SHAPES ARE OPTIMUM HYDRAULICALLY, BUT MAY NOT ALLOW SOME MAINTENANCE EQUIPMENT ENTRY. MODIFY SHAPE TO SUIT WATER AGENCY EQUIPMENT.
 5. WHERE ONE OR MORE INCOMING SEWERS EXCEED 10% GRADE DESIGNER TO CONSIDER SPECIAL DESIGN SUCH AS CURVED SEWERS OR OUTLET TRANSITIONS.
 6. ACUTE ANGLE ENTRY MAY BE APPROVED BY WATER AGENCY FOR LOW FLOWS OR MAY BE ACCOMMODATED BY EXTERNAL DROP JUNCTION OR DROP CHAMBER SEE SEW-1304-V & SEW-1306-V.